

frmPrtClaim

Kendall County

COMBINED CLAIMS LISTING

04/07/17 3:11:46 PM

Page 010

Vendor#	Name
---------	------

Invoice #

Description

Date _____

Budget #

Account Description

Dist Amount

FOREST PRESERVE EXPENDITURE

240 060304
241 060304
242 111513

FIRST NATIONAL BANK OMAHA
FIRST NATIONAL BANK OMAHA
KONICA MINOLTA

03/27/17-DG
03/27/17-DG
30032509

WATER-COURTHOUSE
LETTERS, FOOD
MONTHLY CHARGES 3/20

04/18/17
04/18/17
04/18/17

27020006200
27020006200
27020006200

OFFICE SUPPLIES & POSTAGE
OFFICE SUPPLIES & POSTAGE
OFFICE SUPPLIES & POSTAGE

8.99
32.29
03.01
44.29*

** bantrim
 ** bantrim
 ** ghauge

Vendor#

Name

Invoice #

Description

Date

Budget #

Account Description

Dist Amount

ELLIS WEDDINGS

Total ELLIS RIDING LESSONS

1,158.82*

265 060304 FIRST NATIONAL BANK OMAHA

TRASH P/U-ELLIS

03/27/17-DG

04/18/17

27021207078

REFUSE PICKUP - ELLIS

130.34

** bantrim

130.34*

HOOVER

Total ELLIS WEDDINGS

130.34*

266 030794 CHAMPION ENERGY, LLC.
267 030794 CHAMPION ENERGY, LLC.
268 031510 COMMONWEALTH EDISONHO MULTIPLES
HO BATHHOUSE
HO BASE HOUSE3/31/17
3/31/17
3/31-17-BASE04/18/17
04/18/17
04/18/1727022006861
27022006861
27022006861HOOVER - ELECTRIC
HOOVER - ELECTRIC
HOOVER - ELECTRIC

588.40

** bantrim

249.37

** bantrim

16.65

bantrim

854.42*

269 061450 FLUID TECHNOLOGIES, INC
270 061595 FOX VALLEY FIRE & SAFETY
271 061595 FOX VALLEY FIRE & SAFETY
272 130506 MENARDS
273 130506 MENARDSWELL PUMP TROUBLESHO
CARTRIDGE SWITCH
EXTINGUISHER INSPECT
BUNKHOUSE SUPPLIES
HO TOOLS, SCREEN REP170285
IN00074853,7501
IN00074853,7501
74835
7425704/18/17
04/18/17
04/18/17
04/18/17
04/18/1727022006864
27022006864
27022006864
27022006864
27022006864HOOVER - BUILDING MAINTEN
HOOVER - BUILDING MAINTEN
HOOVER - BUILDING MAINTEN
HOOVER - BUILDING MAINTEN
HOOVER - BUILDING MAINTEN

360.00

bantrim

40.00

bantrim

424.00

bantrim

254.57

bantrim

521.13

bantrim

1,599.70*

274 140553 SONJA NEWTON

ML SEC DEP RTN

17-00045

04/18/17

27022007088

HOOVER SECURITY DEPOSIT R

221.25

bantrim

275 151231 JIM OLSON

BUNKHOUSE SEC DEP RE

17-00065

04/18/17

27022007088

HOOVER SECURITY DEPOSIT R

100.00

bantrim

276 161423 STEVEN POHOVEY

BUNKHOUSE(2) SEC DEP

16-00230

04/18/17

27022007088

HOOVER SECURITY DEPOSIT R

200.00

bantrim

277 265837 THOMAS SHADDIX

SHELTER REFUND

17-00066

04/18/17

27022007088

HOOVER SECURITY DEPOSIT R

50.00

bantrim

571.25*

ENV ED CAMPS

Total HOOVER

3,025.37*

278 060304 FIRST NATIONAL BANK OMAHA

CAMP SUPPLIES

03/21/17-ED

04/18/17

27023026849

ENV EDUC - CAMPS EXPENSE

2.79

** bantrim

2.79*

ENV ED NATURAL BEGINNINGS

Total ENV ED CAMPS

2.79*

279 060304 FIRST NATIONAL BANK OMAHA
280 130506 MENARDSBOOKS, PHOTOS, FOOD
BROOM, WIPES03/27/17-MG
7519804/18/17
04/18/1727023036849
27023036849ENV EDUC - NATURAL BEGINN
ENV EDUC - NATURAL BEGINN

234.49

bantrim

35.93

bantrim

270.42*

ENV ED OTHER PUBLIC PROGRAMS

Total ENV ED NATURAL BEGINNINGS

270.42*

281 030910 AMY CHENAULT

PROGRAM REFUND

3-23-17

04/18/17

27023046849

ENV EDUC - OTHER PUBLIC P

5.00

bantrim

282 060304 FIRST NATIONAL BANK OMAHA
283 080561 JENELLE HELLER

PROGRAM SUPPLIES

03/21/17-ED

04/18/17

27023046849

ENV EDUC - OTHER PUBLIC P

62.75

** bantrim

5.00

bantrim

17.19

bantrim

89.94*

Invoice #	Description	Date	Budget #	Account Description	Dist Amount
ENV ED LAWS OF NATURE					
285 060304	FIRST NATIONAL BANK OMAHA	03/21/17-ED			
	PET SUPPLIES	04/18/17	27023056849	ENV EDUC - LAWS OF NATURE	23.34
					23.34*
				Total ENV ED LAWS OF NATURE	23.34*
NATURAL AREA VOLUNTEER					
286 060304	FIRST NATIONAL BANK OMAHA	03/27/17-DG			
	WORKDAY SUPPLIES	04/18/17	27024006835	NATURAL AREA VOLUNTEER SU	54.09
					54.09*
				Total NATURAL AREA VOLUNTEER	54.09*
GROUND & NATURAL RESOURCES					
287 060304	FIRST NATIONAL BANK OMAHA	03/27/17-DG			
288 220626	VERIZON (FOREST PRESERVE)	9782394259		AT&T-HO	233.37
				CELL PHONES	756.63
					990.00*
289 101297	JOHN DEERE FINANCIAL	03/27/17-2		OIL FILTER-MOWER	29.43
					29.43*
290 110531	KENDALL CO HIGHWAY DEPT	2016-2017 SALT			
291 110531	KENDALL CO HIGHWAY DEPT	APR 3 2017		FUEL - GAS & OIL	409.28
				FUEL - GAS & OIL	923.71
					1,332.99*
292 080905	PATRICK HIGGINS	03/25/17-PH		BOOT ALLOWANCE	75.00
					75.00*
293 060304	FIRST NATIONAL BANK OMAHA	03/21/17-KO			
294 251493	YORKVILLE ACE & RADIO SHACK	162425,162443		BBT BRIDGE REPAIR	118.80
				BBT BRIDGE REPAIR	25.63
					144.43*
295 060304	FIRST NATIONAL BANK OMAHA	03/27/17-DG		TRASH P/U-HOOVER, HA	533.50
					533.50*
296 060304	FIRST NATIONAL BANK OMAHA	03/27/17-DG			
297 101297	JOHN DEERE FINANCIAL	03/27/17		WATER-HARRIS	27.91
298 251493	YORKVILLE ACE & RADIO SHACK	162425,162443		GLOVES, PINESOL	34.42
				SHELTER REPAIR	20.96
					83.29*
				Total GROUND & NATURAL RESOURCES	3,188.64*

COMBINED Claims Listing

Kendall County

04/07/17 3:11:46 PM

Page 016

FP BOND PROCEEDS 2007

343 091207	IL DEPT OF NAT'L RESOURCES	ABC CHECK	APPLICATION FEE FOR	04/18/17	95020006850	PROJECT FUND EXPENSES	300.00 ***
							300.00*
						Total FP BOND PROCEEDS 2007	300.00*
						GRAND TOTAL	\$13,592.84

**KENDALL COUNTY FOREST PRESERVE DISTRICT
COMMISSION MEETING MINUTES**

APRIL 5, 2017

I. Call to Order

President Gilmour called the meeting to order at 6:00 pm in the Kendall County Board Room.

II. Pledge of Allegiance

All present recited the Pledge of Allegiance.

III. Invocation

Commissioner Prochaska offered an invocation for the meeting.

IV. Roll Call

X	Cullick	X	Gryder (entered meeting at 6:05 PM)
X	Davidson	X	Hendrix
X	Flowers	X	Kellogg
X	Gilmour	X	Prochaska
X	Giles	X	Purcell

Commissioners Cullick, Davidson, Flowers, Giles, Gryder, Hendrix, Kellogg, Prochaska, Purcell, and Gilmour all were present.

V. Approval of Agenda

Commissioner Cullick made a motion to approve the agenda as presented. Seconded by Commissioner Flowers. Aye, all. Opposed, none.

VI. Citizens to Be Heard

No public comments were offered by citizens present at the meeting.

VII. Approval of Claims in an Amount Not-to-Exceed \$6,908.89.

Commissioner Kellogg made a motion to approve claims in an amount not-to-exceed \$6,908.89. Seconded by Commissioner Prochaska.

Motion: Commissioner Kellogg

Second: Commissioner Prochaska

Roll call: Commissioners Cullick, Davidson, Flowers, Giles, Hendrix, Kellogg, Prochaska, Purcell, and Gilmour, aye. Opposed, none. Motion unanimously approved.

VIII. Approval of Minutes

Kendall County Forest Preserve Commission Meeting – March 21, 2017

Kendall County Forest Preserve District Finance Committee Meetings – March 1, 2017 and March 30, 2017

Commissioner Cullick made a motion to approve the minutes for the Forest Preserve Commission meeting held on March 21, 2017, and the Forest Preserve Finance Committee meetings held on March 1, 2017 and March 30, 2017. Seconded by Commissioner Hendrix.

All, aye. Opposed, none. Motion unanimously approved.

IX. Peer Financial, Inc. 2017 Refunding Bonds Savings Results and Combined 2015, 2016, and 2017 Series Refunding Bonds Taxpayer Savings Report

Commissioner Gryder entered the meeting at 6:05 pm.

Director Guritz presented an overview of taxpayer savings resulting from the 2017 refunding. Total savings resulting from the issuance of the 2017 refund bonds was \$1,838,075. The combined debt service savings from all three refund series was \$3,837,190 representing a savings of just over \$90 for local taxpayers based on the average Kendall County home value of \$204,100.

Director Guritz reported that the 2017 refunding results were significantly higher than December projections of \$1.2M.

Refund savings projections are based on a 0% growth in the EAV for Kendall County. A second chart presented the debt service savings based on a 2% growth in the EAV for Kendall County, with combined savings of just over \$81, including a reduced annual average debt service tax per average value home ranging from just over \$100 currently to \$128 in levy year 2025.

Commissioner Purcell inquired into whether Director Guritz could recall what the referendum bond literature indicated for projected growth in EAV for Kendall County. Director Guritz stated that he had seen the literature, but could not recall the projected EAV growth, but stated it was likely higher based on the previous 10-year average.

X. Executive Session

None.

XI. Other Items of Business

- The Conservation Foundation 2017 Earth Day Benefit Dinner

Director Guritz requested that Commissioners contact him for purchasing tickets by Wednesday, April 12, 2017.

- Conclusion and Results of the Examination of the Hoover Well Water Distribution System

Director Guritz reported that the well pump control unit is now properly calibrated, with the well pump and distribution system fully operational. The system is holding pressure, and there are no leaks in the system. A walk-through held with the contractor(s) who installed the new water main in 2009 confirmed that the District's water main is disconnected from the Scout Camp water main system. Two service line control valves will need to be replaced, and one additional service line control valve will need to be located at a future date.

Director Guritz reported that District staff is able to record diagnostic readings on the system to insure the system remains calibrated.

XII. Citizens to Be Heard

No public comments were offered by citizens in attendance.

XIII. Adjournment

Commissioner Prochaska made a motion to adjourn. Seconded by Commissioner Flowers. Aye, all. Opposed, none. Meeting adjourned at 6:14 pm.

Respectfully submitted,

David Guritz
Director, Kendall County Forest Preserve District

**KENDALL COUNTY FOREST PRESERVE DISTRICT
FINANCE COMMITTEE MEETING MINUTES**

APRIL 12, 2017

I. Call to Order

Acting Finance Committee Chairman Gilmour called the meeting to order at 4:40 pm in the Kendall County Board Room.

II. Roll Call

X	Cullick (entered the meeting at 5:02 pm)		Gryder
X	Davidson		Kellogg
X	Gilmour	X	Appointed - Prochaska

Commissioners Davidson, Prochaska, and Gilmour all were present.

III. Commissioner Appointment to Committee Service

Acting Chairman Gilmour requested a motion to appoint Commissioner Prochaska to the Finance Committee in order to establish a quorum for the meeting. Commissioner Davidson made a motion to appoint Commissioner Prochaska to the Finance Committee for the duration of the meeting. Seconded by Commissioner Gilmour. Aye, all. Opposed, none.

IV. Approval of Agenda

No objections or amendments to the agenda were recorded.

V. Citizens to be Heard

No public comments were offered by those in attendance.

VI. Approval to Forward Claims in an Amount Not-to-Exceed \$13,592.84.

Commissioner Prochaska made a motion to forward claims to Commission in an amount not-to-exceed \$13,592.84. Seconded by Commissioner Davidson.

Director Guritz reported that charges included in claim #254 for First National Bank included two monthly charges for "The Knot" wedding guide web services. District staff conducted an audit of the account, with one \$250 charge remaining to close out the District's first year contract. This service is scheduled for renewal for a second annual contract in May.

Commissioner Davidson inquired into whether the recent ComEd billing included a full month of service after recalibrating the Hoover well water pump. Director Guritz stated that next month's billing should provide insight into whether the recalibration produces an energy savings.

Director Guritz reported that the Verizon bill statements will likely decrease due to savings generated in the State and local government bid rates. Internet and voice services have been transferred to the District's Verizon account for Ellis House and The Rookery, with resulting savings from the cancellation of three of the District's AT&T service lines.

Commissioner Davidson called the question. All, aye. Opposed, none.

VII. Review of Financial Statements through March 31, 2017

The Finance Committee reviewed the YTD financial statements through March 31, 2017. Director Guritz reported that Latreese Caldwell has completed financial reports by cost center comparing FY16 to FY17 revenues and expenses that will be reviewed at the second Finance Committee meeting in April.

Director Guritz reported that the District is generally on track, with overall YTD expenditures at 3% below budget.

Latreese Caldwell pointed out that it appears that Environmental Education revenues for the period are currently below last year's income for the same period. Director Guritz stated that a report on projected revenues for spring 2017 school programs was prepared for the last Programming and Events Committee with receivables on track for the year based on scheduled programs.

Latreese Caldwell stated that there are areas where year-to-date revenues and expenditures will not match up due to changes in account activity. Farm license revenue in FY 16, for example, was higher than FY 17 due to yield payments received and credited from FY 15. The Ellis House tent expense was incurred as a lump sum payment compared to last year's monthly payment schedule.

Commissioner Gilmour asked what was coded to 2701-000-1325 - Other Revenues. Director Guritz reported that the amount coded to this line item represented a portion of the refund of Republic Services's overbilled amounts for trash service. The balance of the refund was coded to Hoover revenue. The Finance Committee provided direction to create a new Other Revenue GL code for Grounds and Natural Resources.

VIII. Presentation – Progressive Energy Group Energy Supplier Recommendations

Chris Childress with Progressive Energy Group presented a report on recommended energy suppliers, including contracts and projected savings.

Mr. Childress reported that energy supply costs are currently at a historical low, making it an ideal time to enter into longer term contracts based on the futures markets.

Progressive Energy Group audited the District's electric and natural gas accounts. Based on supplier quotes, Progressive Energy Group recommended entering into a 20-month contract with Dynegy Energy Services, LLC for electricity supply at a fixed cost of \$0.06282 per kilowatt hour beginning October 2017 when the District's current contract expires in order to take advantage of including the District's accounts within Kendall County's next competitive bidding cycle.

Progressive Energy Group recommended continuation with Santanna Energy Services for another 12-month contract, renewable month-to-month thereafter, to lock in a variable cost based on the Natural Gas Intelligence Index plus \$0.04 cents per therm.

The resulting savings for electricity is \$1,032, which does not include an additional \$1,200 in avoided charges from increased capacity costs.

The resulting savings for natural gas is \$82.00, with an additional municipal and sales use tax savings of \$58.99.

The total resulting annual savings will be \$1,172.00.

Commissioner Cullick entered the meeting at 5:02 pm.

The Finance Committee reviewed the report and accompanying contracts, directing staff to present the service contracts as presented to Commission for approval.

Commissioner Prochaska made a motion to forward the Santanna Energy Services and Dynegy Energy Services, LLC contracts to Commission for approval. Seconded by Commissioner Cullick. All, aye. Opposed, none.

IX. Hoover Forest Preserve Fuel Tank Supplier Proposals

The Finance Committee discussed the proposal received from GRAINCO FS for restoring the two 500-gallon tanks at Hoover Forest Preserve into service. Director Guritz reported that he was waiting to hear back from Elburn Coop from their Newark office, which presently supplies fuels to the Kendall County Highway Department. Elburn Coop has stated that if they have a spare, used tank available, the fuel tank can be delivered to Hoover Forest

Preserve at no cost. Otherwise, the District would need to enter into a lease-to-own contract, after which the costs of the two proposals can be prepared.

Director Guritz stated that regardless of the supplier, the District will need to evaluate and possibly repair the electric service line(s) extending from the Old Shop building to the fuel pump(s) concrete pad located a short distance away.

The Finance Committee discussed the GRAINCO FS proposal received. Commissioner Davidson stated that the tanks at Hoover have been abandoned, and should be considered District property. Director Guritz asked if the Committee had any additional directions to pursue in order to reach a final recommendation. The Finance Committee indicated that once the Elburn Coop proposal is received, the Committee will develop a recommendation for Commission consideration.

X. Trash Removal and Recycling Services Bid Opening Results

The Finance Committee reviewed the bid results for trash removal and recycling services for the District.

Director Guritz expressed appreciation for Latreese Caldwell's efforts, and support of District staff members' participation with the evaluation of trash pickup service needs, which has generated significant savings over the prior contract.

Director Guritz reported that Waste Management was the low bidder, extending annual trash removal service fees of \$3,986.27. Republic Services was the second lowest bidder, with extended annual service fees of \$4,010.00.

The District is currently in discussions with Waste Management, and expects to receive contract service agreements that will be reviewed by the State's Attorney's Office and presented to Commission for approval likely during the May 2, 2017 Commission meeting. The District's bid specifications did include a contract document that will act as the controlling document, with the Waste Management agreements incorporated as a contract addendum, if acceptable.

Director Guritz reported that following the bid opening, Waste Management requested that the trash dumpster at Hoover be reduced in size from a 10 cubic yard unit picked up once per week to an 8 cubic yard unit picked up twice weekly. Director Guritz responded that this would be acceptable, with pickups to be scheduled on Fridays and Mondays.

The anticipated savings for trash and recycling pickup is \$3,066.37 each year over the three year contract period.

Commissioner Cullick made a motion to forward the final contract with Waste Management to Commission for approval following review by the State's Attorney's Office. Seconded by Commissioner Prochaska. All, aye. Opposed, none.

XI. Dump Truck Vehicle Bid Specifications Overview

Director Guritz reported that the bid specifications for the purchase of a replacement 1-ton dump truck have been published online, with notification posted in the Kendall County Record on April 6, 2017. The bid specifications and bid form require bidders to submit a base bid representing the purchase of a 1-ton dump truck, with a hydraulic stainless steel dump box, snow plow assembly, and tailgate mounted salt spreader, and deduct alternates including the trade-in value of the 1991 GMC 1-ton dump truck, substitution of a mild steel dump box, and deduct for the tailgate mounted spreader which would not be recommended for purchase should Commission elect to purchase a replacement truck with a mid steel dump box.

Director Guritz explained that per Finance Committee request, the bid form was modified to include a deduct alternatives in order to determine the price difference between purchase of the stainless steel dump box versus the mild steel dump box. Director Guritz explained that if a mild steel dump box is selected, the District will need to identify and purchase a separate salt spreader bin assembly that will be retrofit within the dump box to protect the mild steel.

Director Guritz invited Superintendent Olson to the meeting to provide further detail on the District's needs and uses for the new vehicle.

Commissioner Davidson stated that the Kendall County Highway Department trucks are all mild steel. Director Guritz stated that the Highway Department has sufficient staff to properly care for their vehicles after each use to prevent significant corrosion of the bed.

Commissioner Davidson expressed concerns with the cost and maintenance of the box-mounted bid spreaders. Director Guritz agreed, reporting that the District has had to service the Tornado bin spreader units, replacing belts and chains that have been damaged or worn down over the years.

Commissioner Davidson expressed concerns that the diesel engine specified will require electricity for preheating of the starter four months out of the year. Commissioner Davidson expressed additional concerns that the District does not drive the truck enough to justify purchase of the diesel engine and stainless steel bed. Limited use could cause the fuel lines to gel up over time adding additional maintenance costs.

Director Guritz stated that he asked Superintendent Olson to provide the full picture of District use of the proposed vehicle so that Commission can make an informed decision when deliberating the bid results.

Superintendent Olson thanked the Finance Committee for allowing the time to explain the District's needs.

Superintendent Olson stated that the vehicle specifications were developed to allow for District use of the truck for multiple purposes over the winter months. The District currently uses cold-temperature formulated diesel fuel from Kendall County Highway Department over the winter months in all of its diesel trucks, and the truck will remain in the heated garage at Harris when not in use.

The estimated anticipated cost difference between mild steel and stainless steel is \$3,000, and will provide a return on investment in staff time, and load capacity which is increased by 500 pounds over the mild steel option. This means fewer trips, and less man hours. The added utility will allow the District to use the new truck all winter long for hauling gravel, brush and dirt loads between plowing and salting events.

Superintendent Olson stated that she works hard to provide options to Commission that provide the biggest bang for the buck in terms of cost, utility, and staff efficiency.

Director Guritz stated that the most compelling justification for purchase of the vehicle as specified is the added utility over the winter months. The salt spreader assembly is easily mounted, and takes up less storage. Currently, salt bins stay mounted in the truck bed over the winter season limiting utility. The new vehicle can be used for multiple purposes with the proposed salt spreader mounted in place over the winter months.

The stainless steel bed's longevity is matched with the anticipated longevity of the diesel engine.

Commissioner Gilmour asked whether there is a fuel savings by going with diesel. Superintendent Olson stated that in the past there was a fuel savings, but currently there is no significant difference in fuel costs.

XII. Other Items of Business

OmniTRAX Public Grade Crossing Applications

Director Guritz reported that a Public Grade Crossing Application form has been received from OmniTRAX, Inc. and included with the Finance Committee packets for review. The OmniTRAX application form was requested from the company in follow-up to the District's request to construct trail improvements leading into the asphalt surfacing improvements recently completed at Millbrook South by Illinois Railway.

The application calls for a \$4,000 non-refundable application fee, and requires the District to reimburse the railroad for any cost incurred to install, maintain, and supervise construction improvements, with the public agency taking on all liability for accidents or injuries arising as a result of the installation.

In discussions with the Elizabeth McGuire, Manager for Railroad Real Estate with OmniTRAX, it was explained that the District had been negotiating a crossing agreement for

Hoover Forest Preserve after the District acquired the property from the Chicago Area Boy Scouts back in 2007. Elizabeth McGuire indicated that she had been working with Jason Pettit to draft a 'red-lined' agreement for Hoover Forest Preserve, but that communication had stopped, and the subject crossing agreement had not been completed.

Director Guritz stated that he requested a copy of the draft agreement for review, and informed Ms. McGuire that the company has not complied with the ICC order that requires the company to provide cost estimates and designs for the construction of proposed crossing improvements at Hoover Forest Preserve, and that he would need to discuss the application materials with the State's Attorney's Office and City of Yorkville Attorney, Kathleen Orr.

Director Guritz stated that the District will likely need to file applications, and enter into crossing agreements with OmniTRAX, Inc. and Illinois Railway because the company owns the property, and the District's property titles do not delineate a crossing easement. Director Guritz stated that he would be informing Commission of the development during the April 18, 2017 Commission meeting in order to request direction and feedback.

Separately, Director Guritz stated that he has reached out to Jennifer Kuntz, Assistant Chief Counsel with IDOT, and Kathleen Orr, Attorney for Yorkville to determine the process for informing the ICC that OmniTRAX, Inc. has failed to comply with the ICC order. This will require the District to reimburse the City of Yorkville for the associated legal fees to hold an initial conference and file the ICC notification of non-compliance with the order.

Director Guritz expressed concerns that OmniTRAX could block off the existing crossings, or hold up the progress that could impact the availability of the \$250,000 FHA grant for constructing the crossing improvements.

Commissioner Gilmour requested that the item be discussed with the full Board at the April 18, 2017 Commission meeting.

Henneberry Restoration and Mitigation Project Updates

Director Guritz reported that Debbie Mika, President of the Whitetail Ridge Homeowners' Association, had contacted him following the presentation of the District's request for parcel access to complete the Henneberry restoration project, with a request for additional information related to the anticipated construction project timeline, work crew size, equipment use, and fencing materials, along with a request for consideration for the District's funding of improvements and 5-year maintenance within the access parcel.

A letter including a draft proposal has been developed for review which includes a proposed turf trail spur extension that would provide resident and District staff access (as well as a prescribed burn firebreak) to the restoration area for consideration.

The District will receive a formal response to the request for preserve access to complete the project following submission of the District's letter and proposal, and review and discussion by the HOA at their May meeting.

XIII. Executive Session

Commissioner Cullick made a motion to enter into executive session under 2(c)1 of the Open Meetings Act to discuss the appointment, employment, compensation, discipline, performance, or dismissal of specific employees of the public body or legal counsel for the public body, including hearing testimony on a complaint lodged against an employee of the public body or against legal counsel for the public body to determine its validity. Seconded by Commissioner Gilmour.

Roll Call: Commissioners Davidson, Gilmour, Prochaska, and Cullick, aye. Opposed, none.

Executive session called to order at 5:52 pm.

Commissioner Purcell attended the Executive Session.

Commissioner Davidson made a motion to adjourn from executive session. Seconded by Commissioner Prochaska. Aye, all. Opposed, none.

Regular meeting resumed at 6:17pm.

XIV. Other Items of Business (Continued)

Overview of Hoover Forest Preserve Geothermal Heating and Cooling System

Director Guritz introduced Kyle Corniels, Service Technician for Artlip and Sons, Inc. to provide an overview of the geothermal heating and cooling system at Hoover Forest Preserve.

Mr. Corniels reported that Artlip and Sons was contracted for the installation of the geothermal heating and cooling system for Meadowhawk Lodge. This did not include the installation of the geothermal well and coil system, with their effort focused on installing the fittings within the building, and completing the connections the pumps that circulate the glycol solution that circulates from the geothermal field into the building.

The geothermal system operates similar to conventional system heat pumps, with the exception that the flow is reversed to bring in warmed or cooled glycol fluid from the field into the building depending on the time of year. The solution is cooler than the air temperature in summer months and warmer than the ambient air temperature in the winter months.

Instead of having a fan on the outside that uses outside air to remove heat from the refrigerant, the geothermal system uses the underground temperature in the well, and pumps the fluid at that temperature to maintain a constant temperature in the building.

Electric refrigeration systems are complex and not very efficient when the temperature drops below 32 degrees. Typically, homes having electric air conditioning systems also have electric heating systems, which is costly to run in the winter months.

Geothermal systems maintain a year round temperature of around 50 degrees (40 degrees at the lowest in the winter months). Heat is extracted from the ground, or put back into the ground, depending on the time of year.

This makes geothermal systems more efficient because it is easier to heat or cool the building over the course of the year because you are not heating, or extracting heat from hot or cold air temperatures in winter and summer.

Geothermal systems are more costly to install, but provides a higher-efficient system, and requires less maintenance because the heat pumps do not require combustion, which builds up residues over time and need to be cleaned periodically.

There are components that do need to be cleaned periodically, particularly where the electrical heat pump compressors are actuated, which can wear out over time.

Maintenance focuses on insuring that the system is operating efficiently, and that the pump compressor actuators are not worn out and functioning effectively. This is part of the proposed annual maintenance scope of work. In addition, each of the five main air filters in the system need to be changed out once per year. Four of these filters service the main lodge area, and one filter handles the entry foyer of the lodge. Each of these air filters is tied to its own compressor and pump that draws in the glycol solution from the geothermal field. These five units should be inspected on an annual basis.

Because of the type of building, adequate air changes are required to meet ambient air quality standards. In order to accomplish this, a large amount of outside air is brought into the building through the energy recovery ventilator (ERV). Anytime fresh air is introduced into a space, overall energy efficiency is reduced. The ERV is designed to pre-heat or pre-cool the outside air coming into the building using the temperature of the building's outgoing air to boost energy efficiency.

The incoming air is balanced by volume with the outgoing air through the ERV to keep the pressure static between the inside and outside of the building. The ERV is the dirtiest piece of equipment for the building, requiring a change of the filters and belts every 6-months. Whenever the building is programmed for occupancy, the unit is designed to kick on and change out the volume of air in the building based on indoor air quality standards.

Because the space is not heavily used, it is not necessary to change out the five main filters twice in a year.

Director Guritz asked whether an additional geothermal system was installed for the Caretaker's Residence. Mr. Corneils indicated that there are likely two geothermal wells handling each of the two air spaces for the lodge, but was not aware of other installed geothermal systems on the property.

Commissioner Davidson asked whether the system is actually saving the District money on energy use.

Mr. Corneils stated that he was not able to state an opinion on this, but expressed confidence that the system is operating effectively, citing energy consumption studies undertaken by other public agencies with similar system designs that documented a significant rate of return on the investment over conventional heating and cooling approaches.

Director Guritz asked whether Artlip and Sons handled other components. Mr. Corneils stated that Artlip and Sons also worked on the exhaust fans including the gas and oven range top exhaust system.

Mr. Corneils explained that one main pump keeps the glycol solution circulating in the closed loop. The other compressor pumps kick on to heat or cool the sections of the building when occupied based on temperature differential. The main pump is a very efficient variable speed pump. It does not take much energy to keep the glycol solution flowing when the building is not in active use.

Director Guritz inquired into whether the other HVAC system components including the blowers in the main lodge and foyer areas were installed and maintained by Artlip and Sons. Mr. Corneils stated that the HVAC system includes direct drive circular fans which his company does maintain and would inspect as part of the annual maintenance contract. This service includes checking the air handlers, fan motor bearings, and checking and flushing the static drains on each, as they do condensate during use.

Mr. Corneils stated that Artlip and Sons has been actively installing similar systems for schools in Aurora. Based on the pilot project, the school district is expanding orders for installation of geothermal systems for their other schools based on a proven 10-year anticipated payback after studying the first 2-years of operation.

Director Guritz asked whether the system installed at Hoover was overbuilt. Mr. Corneils stated that the system as designed is well built, but not overbuilt. The additional equipment installed allows heating and cooling to phase in based on the needs for the space.

XV. Citizens to be Heard

No public comments were offered by those in attendance.

XVI. Adjournment

Commissioner Davidson made a motion to adjourn. Seconded by Commissioner Prochaska. All, aye. Opposed, none. Meeting adjourned at 6:42 pm.

Respectfully submitted,

David Guritz
Executive Director, Kendall County Forest Preserve District

ELECTRIC SERVICE AGREEMENT – EXHIBIT A

NOTICE & CONTACT INFORMATION			
DYNEGY ENERGY SERVICES, LLC ("Supplier")		KENDALL COUNTY FOREST PRESERVE	
Notices:	Attn. Customer Care	All Notices & Invoices (Please do not use P. O. Boxes for the Notices Address)	
	1500 Eastport Plaza Drive	Attention:	DAVE GURITZ
	Collinsville, Illinois 62234	Street:	110 W MADISON ST
Customer Care Telephone:	844-441-0716	City, ST & Zip:	YORKVILLE, IL 60560
Customer Care E-Mail:	DEScustomer@Dynergy.com	Phone:	630-553-4131
DUNS #:	07-874-4061	Fax:	
Federal Tax ID #:	90-0924805	DUNS #:	
Delivery Service Provider:	877-426-6331	Federal Tax ID #:	

THIS EXECUTABLE OFFER BECOMES BINDING UPON EXECUTION SUBJECT TO CUSTOMER EXECUTING THE AGREEMENT PRIOR TO MIDNIGHT ON THURSDAY, MARCH 30, 2017!

THE TERMS AND CONDITIONS HEREIN ARE HIGHLY CONFIDENTIAL AND PROPRIETARY AND SHALL NOT BE RELEASED TO ANY PERSON, FIRM OR ENTITY WITHOUT THE EXPRESSED PERMISSION OF SUPPLIER.

TABLE 1: PRICING AND TERM INFORMATION

Power Price (¢/ kWh)	Initial Term Begins	Initial Term Ends
6.282	October 2017	October 2020

TABLE 2: ACCOUNT INFORMATION for Kendall County Forest Preserve AS OF 3/30/2017

Delivery Service Provider (DSP)	DSP Account #	Bill Group	Service Location
ComEd	9361548011	12	13986 N MCKENNA ROAD MINOOKA, IL 60447
ComEd	5514711002	21	10460 ROUTE 71 YORKVILLE, IL 60560
ComEd	5514710005	21	10460 ROUTE 71 YORKVILLE, IL 60560
ComEd	0793673015	3	11285A FOX ROAD YORKVILLE, IL 60560
ComEd	0756081017	3	11285D FOX ROAD YORKVILLE, IL 60560

☐ Check here if you are a local government entity as defined by 50 ILCS 505/Local Government Prompt Payment Act.

By signing this Exhibit A, Customer authorizes the DSP to enroll Customer's account for retail electric service supply provided by Supplier.

After reviewing the Terms and Conditions of Electric Service, please sign below and initial all pages of this agreement to enroll your electric service with Supplier. If you have any questions or need additional information, call us toll free at 1-888-451-3911, Option 3. By your signature below, you are certifying you are authorized to enter into this Agreement with Supplier.

Kendall County Forest Preserve
(SIGN HERE)

Signature: _____ Date: _____
 Print Name: _____
 Print Title: _____
 Print E-Mail: _____

Upon execution and acceptance by Supplier, this Agreement is binding.

ELECTRIC SERVICE AGREEMENT

TERMS AND CONDITIONS

Please return a signed copy to DESContracts@Dynergy.com OR to fax 888-354-9837.
Retain a copy for your records. Supplier will forward all necessary documents to the DSP.

ELECTRIC SERVICE AGREEMENT TERMS AND CONDITIONS

This Electric Service Agreement Terms & Conditions and associated Exhibit A (collectively, the "Agreement"), by and between Supplier and Customer applies to, and represents the entirety of, Supplier's and Customer's understandings and agreements regarding Customer's full requirements for electricity to the Account(s) set forth in Table 2 ("Retail Power"). Supplier and Customer may be referred to herein individually as a "Party" and collectively as the "Parties".

Eligibility: This Agreement is only applicable to non-residential accounts that are less than 400 kW, and if more than one account less than 2,000 kW in aggregate, as defined by the Delivery Service Provider ("DSP") and as designated at the time of execution of this Agreement. **Customer must complete and sign Exhibit A, initial all other pages, and return all pages of this Agreement to Supplier.** Supplier reserves the right to not initiate service under this Agreement if, at Supplier's sole discretion, it is determined Customer is ineligible for this offer.

Power Price: Supplier will arrange for delivery of Customer's Retail Power. The Power Price noted in Exhibit A includes charges for energy, capacity, applicable Regional Transmission Operator and ancillary services, distribution and transmission energy losses, charges associated with the purchase, acquisition and delivery of renewable energy certificates (RECs) in accordance with the Illinois state mandated Renewable Portfolio Standard requirements, if applicable, plus scheduling and load forecasting associated with the delivery of Customer's Retail Power. It is understood and agreed that any RECs purchased and retired in accordance with the aforesaid state mandate is not the property of Customer and Customer has no claim, interest, or right to said RECs, or any value derived therefrom.

Term: Retail Power delivery will begin for each Account, contingent upon confirmation of successfully enrolled Direct Access Service Request from the host DSP, on the first available meter reading date of the month noted under Initial Term Begins in Table 1 or as soon as possible thereafter, and ends on the regularly scheduled meter reading date for the month noted under Initial Term Ends in Table 1, unless Customer and Supplier mutually agree to extend the Term of this Agreement in writing. Regularly scheduled meter reading dates are defined by the DSP Bill Group.

Billing and Payment: Customer will receive a single bill from the DSP that contains Supplier charges set forth in this Agreement and DSP charges. Customer will make payments to the DSP according to the DSP's billing rules and schedules. Failure to pay Supplier charges may result in the Account(s) being returned to the DSP's standard service and forfeiture of Customer's right to choose another retail electric service provider until past due amounts are paid. Failure to pay invoice charges may result in the Account(s) being disconnected in accordance with the DSP's business practices.

If, due to DSP rules, any Account(s) become ineligible for a single bill from the DSP, at any time during contract, then Supplier will issue an invoice for all ineligible Account(s). Supplier's invoice will reflect the Power Price for Retail Power times the kWh each month for those accounts billed by supplier. Customer will make payments to Supplier within twenty-one (21) days from the invoice date. Late payment charges may be assessed at the rate of 1.5% per month of the outstanding invoice amount if not received by the due date. If specified above that Customer is a local government entity as defined by 50 ILCS 505/ Local Government Prompt Payment Act (the "Act"), then in such event the Act shall control with regard to the calculation of

payment due dates and late payment charges. All other provisions in this paragraph remain the same and are in effect.

Financial Responsibility: If requested, Customer shall provide a payment history record from the DSP to determine Customer's creditworthiness. If Customer's credit becomes unsatisfactory including, but not limited to, a consistent pattern of late payments, as determined by Supplier in a commercially reasonable manner, during the Term of this Agreement, Supplier may terminate this Agreement by 15 calendar days' notice of cancellation. Customer remains obligated to pay for all Retail Power delivered within 10 calendar days following the termination date.

Force Majeure: If a Party is unable to perform under this Agreement because of circumstances not reasonably within its control, including suspension, curtailment or service disruption, acts of God, breakage of transmission and delivery facilities or weather disasters, it will provide written notice to the other Party, and the Party's performance is excused for the duration of the Force Majeure event.

Limitation of Liability: DSP CONTINUES TO PROVIDE DELIVERY SERVICES UNDER THIS AGREEMENT; THEREFORE, SUPPLIER WILL NOT BE LIABLE FOR ANY INJURY, LOSS, CLAIM, EXPENSE, LIABILITY OR DAMAGE RESULTING FROM FAILURE BY DSP OR TRANSMISSION PROVIDER. SUPPLIER IS ALSO NOT LIABLE FOR ANY INJURY, LOSS OR DAMAGE RESULTING FROM INTERRUPTION, INSUFFICIENCY OR IRREGULARITIES OF SERVICE. IN NO EVENT WILL EITHER PARTY BE LIABLE TO THE OTHER PARTY OR TO ANY THIRD-PARTY, FOR ANY SPECIAL, INCIDENTAL, INDIRECT, CONSEQUENTIAL, PUNITIVE OR EXEMPLARY DAMAGES OR FOR ANY DAMAGES OF A SIMILAR NATURE ARISING OUT OF OR IN CONNECTION WITH THIS AGREEMENT.

Change in Law: If there is a change in law, regulation, applicable tariff, or regulatory interpretation thereof that affects herein during the Term as determined in the sole discretion of Supplier, Supplier shall modify those charges to reflect such change, and the modified charges shall appear on the next monthly invoice.

Dispute Resolution: In the event of a dispute concerning the observance or performance of any of the terms or conditions herein, and the Parties are not otherwise able to resolve such dispute within 30 days after notice, the Parties agree the dispute shall be resolved by arbitration in accordance with the rules and regulations established by the American Arbitration Association ("AAA"). Any decision rendered by the AAA shall be final and binding, and judgment may be entered by any court of competent jurisdiction.

Miscellaneous: The Parties agree that the laws of the State of Illinois shall govern this Agreement. Customer may not assign this Agreement without the written consent of Supplier. The Agreement is a forward contract under applicable bankruptcy laws.

Customer Service: For questions about this Agreement, electric supply charges, or a change in Customer name, please contact our Customer Care Department by calling toll-free or by e-mail at the information found in Exhibit A. Our hours of operation are weekdays 7:30 am – 4:30 PM (CST).

IN THE EVENT OF AN EMERGENCY, POWER OUTAGE, OR WIRES AND EQUIPEMENT SERVICE NEEDS, CONTACT YOUR DELIVERY SERVICE PROVIDER AT THE PHONE NUMBER LISTED IN EXHIBIT A.



Paying too much? There is a Choice!!

Natural Gas Agreement Terms and Conditions

- **Gas Price:** Your gas price with SES will be based on the Natural Gas Intelligence ("NGI") index. For 12 months, starting on the date of first delivery by SES, your gas price will be **NGI + 0.04 cents per therm**. After this initial period your price will change to **NGI + 0.04 cents per therm** for successive month to month terms. You understand that the monthly index (NGI) price fluctuates each month.
- **Initial Term:** Initial term of **12 months** from date of first delivery - with automatic renewal for successive month to month terms.
- **Admin. Fee: \$0.00 per month.**
- **Rescission Terms:** You may rescind your enrollment without penalty within 10 business days after the date on the gas utility notice to the customer. To do this, you should contact Santanna at 800.764.4427, or your utility company's customer service. (**Nicor Gas: 888.642.6748**), (North Shore Gas: 866.556.6004), (Peoples Gas: 866.556.6001)
- **Cancellation:** You may terminate this agreement without any cancellation fee or penalty within 10 business days after the date of the first bill is issued to you. After 10 business days from the date of the first bill is issued to you, if you cancel before the end of the initial term of this contract, an early termination fee of \$50.00 will be charged. It may take your utility additional time to complete the cancellation process, as required under program rules. You are responsible for all charges through the date cancellation is finalized by your utility company.
- **Payment Terms/Late Fees:** Payments are applied to past due invoices first, then current balance. Late fees are 1.5% per month.
- **Collection:** You will be responsible for any costs or legal fees incurred by SES related to the enforcement of this agreement.
- **Utility Charges/Program Cost:** Your Gas Utility will charge SES for retail program-related charges relative to your account and usage. These charges over the last 12 months averaged about a 1/2 cent per therm of usage. SES will pass all monthly program-related charges to you. All Gas Utility related distribution charges and taxes are your responsibility.
- **Quantity:** You will be charged for the amount of gas you use, according to your metered consumption as reported by your Gas Utility, plus unaccounted-for gas / fuel (F&S) charges. This is a contract requirement.
- **Agency:** You appoint SES as your agent for the purposes of securing your natural gas supply and grant SES authorization to access your Gas Utility account information, transcripts, and payment history. You also appoint SES as your agent for the purpose of enrolling, servicing and billing you for any products or services other than natural gas offered by or through SES, if you choose such products or services in the future, and you authorize SES to bill you for such products or services on your monthly Gas Utility bill. This agreement shall be binding upon and benefit the Parties hereto and their respective successors and assigns. SES reserves the right to assign this agreement upon written notification.
- **Force Majeure:** Certain causes and events out of control of SES (called Force Majeure Events) may result in interruptions in service and effect the price until the results of the causes and events are corrected. SES will not be liable for the results of any such interruptions or price changes caused by Force Majeure Events, including but not limited to acts of God, catastrophic weather events, acts of any governmental authority, accidents, strikes, labor disputes, changes in laws, rules or regulation by any governmental authority, or any cause beyond SES's control.

Yes, Please Enroll me in the Santanna Program!

Name (First Name/Last Name) Dave Guritz
Business/Company Name: Kendall County Forest Preserve
Bill/Mailing Address: 110 W Madison St
City Yorkville State IL Zip 60560
Phone: (630) 553 - 4131 Fax: () - - Federal Tax ID/SSN: - - - - -
Email Address dguritz@co.kendall.il.us

Account #: see attached account list ☐ Commercial

Last Billed Usage: ☒ Nicor Gas

☒ **Competitive Market Program at a monthly index rate of (NGI) + .04 cents per therm.**

By entering into this agreement, you appoint SES as your agent for the purposes of securing your natural gas supply, and grant SES authorization to access your Gas Utility account information, transcripts, and payment history. I understand that I may be subject to cancellation or switching fees from my utility company and/or current supplier. After 10 business days from the date of the first bill issued to you, if you cancel before the end of the initial term of this contract, an early termination fee of \$50.00 will be charged. I have read and agree to the terms and conditions of this Natural Gas Agreement and acknowledge receipt of a copy of this agreement. By signing this agreement, I/my company agree(s) to buy my/my company's natural gas commodity requirements from Santanna Energy Services ("SES"). I acknowledge that the independent authorized representative identified himself/herself clearly as representing SES. This Agreement is with a Certified Alternative Gas Supplier, NOT the local Gas Utility. You will be supplied with natural gas whether or not you sign this Agreement. (2546)

Authorized Signature: _____ Date: ____/____/____
Account Holder ☐ Authorized Decision Maker ☐ Agent ID: _____
Agent Name: _____ Agent Signature: _____ Office Verified ☐

Santanna Energy Services - Customer Service - 1-800-764-4427

Kendall County Forest Preserve

Natural Gas Account List

Account Number:	Meter:	Classification:	Service Address:
88-55-14-0114	4603360	Commercial	11285 Fox Rd Yorkville, IL 60560
50-98-01-9712	2292357	Commercial	11285 Fox Rd #2 Yorkville, IL 60560
72-38-93-7412	4551335	Residential	11285 Fox Rd Unit A Yorkville, IL 60560



Letter of Agency NICOR GAS

Customer Authorization for Change in Natural Gas Service Provider to Santanna Energy Services

By accepting this Letter of Agency, I understand and affirm the following:

1. I agree to buy my natural gas commodity requirements from Santanna Energy Services ("SES"). I affirm that I am authorized to change my natural gas service from my current provider to SES. I appoint SES as my agent for the purposes of securing my natural gas supply, and I grant SES authorization to use my enrollment information for billing, correspondence, and access to my natural gas utility usage history.
2. I affirm that the terms and conditions and nature of service, including the rate to be provided to me have been clearly and conspicuously disclosed to me in the Gas Sales Agreement document. I affirm that I have read this document and agree to the Terms and Conditions.
3. I affirm and understand that any natural gas service supplier selection that I choose may involve a charge to me for changing or cancelling my natural gas service if I am currently under contract with another provider.
4. I affirm that my correct and legal name and billing address for my account with SES is as listed below:

Customer Name: (Print) Kendall County Forest Preserve

Mailing Address: 110 W Madison St Yorkville, IL 60560

Account Number: 5098019712, 7238937412, 8855140114

Customer Signature: _____

Date: _____

Kendall County Forest Preserve Electric and Natural Gas Procurement Review

March 30, 2017



Illinois Market Conditions



Factors That Are Keeping Prices Lower

- Strong Supply (Fracking and Storage Injections)
- Economic Downturn
- Natural Gas Storage Levels
- Alternative Energy Sources (Wind/Solar, Geo-Thermal)
- No Recent Hurricanes That Curb Natural Gas Production

Factors That Drive Prices Higher in the Future

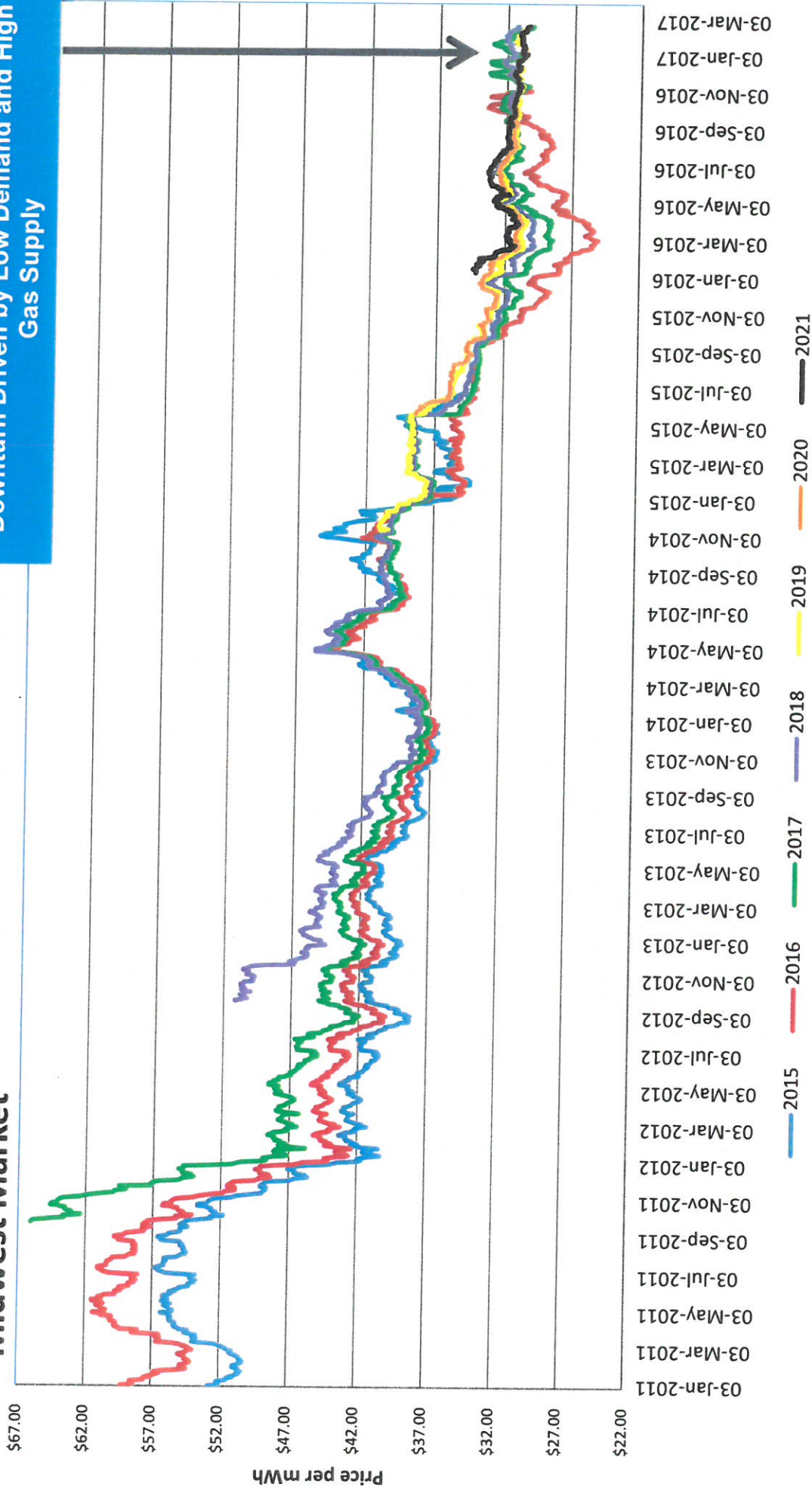
- Rebound of Industrial and Commercial Demand
- Natural Gas Rig Count
- Future Restrictions on Fracking
- LNG Exports
- Catastrophic event – Hurricane, Terror Threat

Wholesale Power Price



Midwest Market

Downturn Driven by Low Demand and High Gas Supply



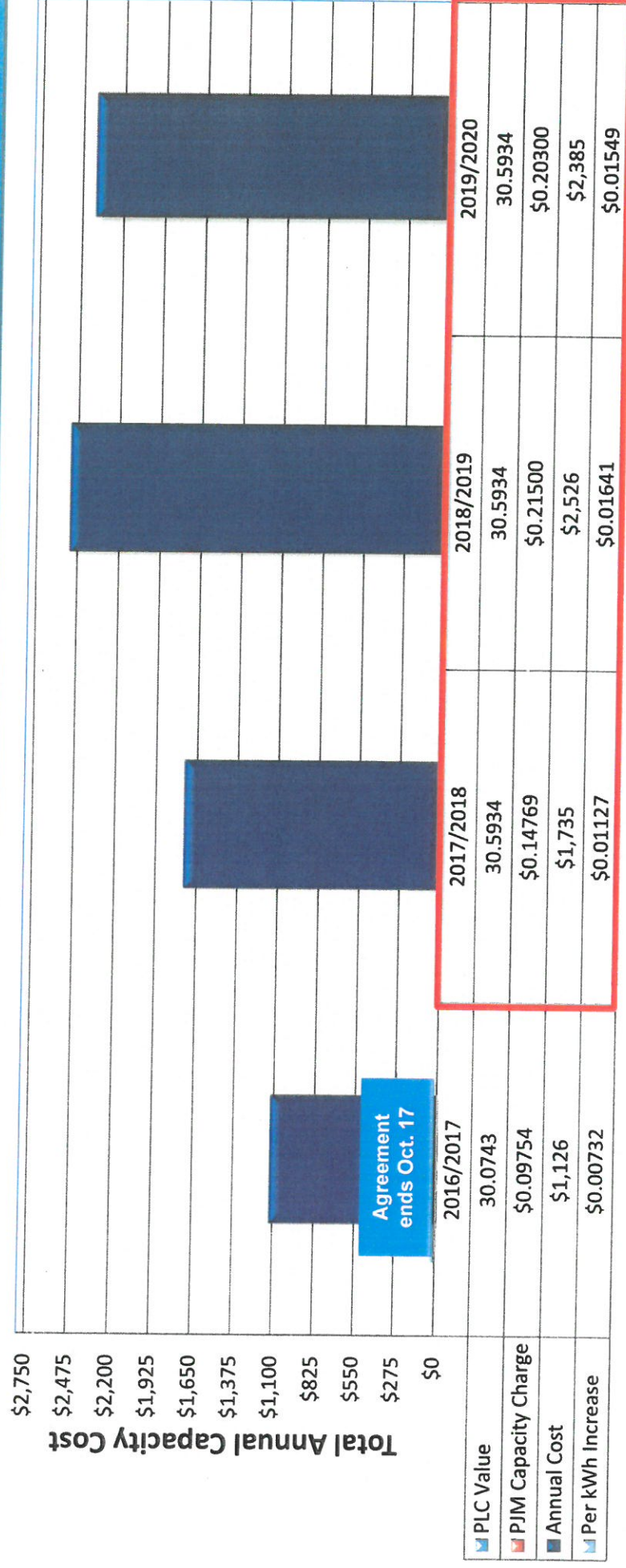
Capacity Cost Increasing



What Are Capacity Costs?

Simply stated capacity is the cost of ensuring the reliability of the network. Through PJM an RPM (Reliability Pricing Model) auction is held to set capacity prices in one year increments (Jun-May). Capacity costs will be increasing 2 out of the next 3 years, to their highest level in PJM West (Regional Transmission Authority) .

How Will Capacity Costs Affect Kendall County Forest Preserve (Aggregated)?



Electric Audit Analysis



Review of Electric Contract (Supply/Delivery) Commercial Accounts

- 11 accounts reviewed for the Kendall County Forest Preserve
 - 5 accounts are under contract with Champion Energy
 - Contracted rate = \$0.06248
 - 36 month contract signed October 2014
 - » Contract ends October 2017
 - Total projected annual use of 153,955 kWh
 - Validated rate, rider, and tariff charges

- Remaining 6 electric accounts:
 - 2 very Small Commercial (3 kWh's annually)
 - 1 Watt Hour
 - 2 Residential
 - 1 with Ameren
 - These accounts should remain under the current utility program (Kendall County Municipal Aggregation or Utility tariff rates)

Electric Auction Results



SUPPLIER QUOTES - October 2017

Supplier	12 Months	20 Months	24 Months	36 Months
Dynegy Energy:	\$0.06118	\$0.06282	\$0.06250	\$0.06227
Direct Energy:	\$0.06161	\$0.06290	\$0.06255	-
Constellation Energy:	\$0.06870	-	\$0.07020	\$0.07030
Hudson Energy:	\$0.06540	\$0.06560	\$0.06600	\$0.06600
MC Squared Energy:	\$0.06412	\$0.06487	\$0.06553	-
AEP Energy:	\$0.06896	-	\$0.07023	-
Nordic Energy:	\$0.06355	\$0.06446	\$0.06493	-
Champion Energy:	\$0.07065	\$0.07237	\$0.07175	\$0.07173
Public Power Energy:	\$0.07080	\$0.07260	\$0.07180	\$0.07194
Engie Resources:	\$0.06896	\$0.07082	\$0.07082	\$0.07097
Eligo Energy:	\$0.06515	\$0.06554	\$0.06547	\$0.06513
Santanna Energy Services:	\$0.06747	\$0.06981	\$0.06915	-
Agera Energy:	\$0.06535	\$0.06606	\$0.06598	\$0.06494
Oasis Energy:	\$0.06550	-	\$0.06670	-

Electric Auction Results



Account Name	Account Number	Service Address	Utility Classification	Annual Usage	Current Rate	Current Annual Spend	Recommended Supplier	Recommended Supplier Rate	Projected Annual Spend	Projected Annual Savings	Notes
Kendall County Forest Preserve	0756081017	11285D Fox Rd	0-100 kW	25,589	\$0.06288	\$1,609	Dynegy Energy	\$0.06282	\$1,608	\$2	20 Month Contract
Kendall County Forest Preserve	9361548011	13986 N McKanna Rd	0-100 kW	46,777	\$0.07187	\$3,362	Dynegy Energy	\$0.06282	\$2,939	\$423	20 Month Contract
Kendall County Forest Preserve	0793673015	11285A Fox Rd	0-100 kW	73,949	\$0.07048	\$5,212	Dynegy Energy	\$0.06282	\$4,645	\$567	20 Month Contract
Kendall County Forest Preserve	5514710005	10460 Rt 71	Watt Hour	905	\$0.06878	\$62	Dynegy Energy	\$0.06282	\$57	\$5	20 Month Contract
Kendall County Forest Preserve	5514711002	10460 Rt 71	Watt Hour	6,735	\$0.06796	\$458	Dynegy Energy	\$0.06282	\$423	\$35	20 Month Contract
Totals				153,955		\$10,703			\$9,671	\$1,032	

Account Name	Account Number	Service Address	Utility Classification	Annual Usage	Current Rate	Current Annual Spend	Recommended Supplier	Recommended Supplier Rate	Projected Annual Spend	Projected Annual Savings	Notes
Kendall County Forest Preserve	27864-44006	RR 2									Stay with Ameren
Kendall County Forest Preserve	1123166102	860 Creek Rd	0-100 kW	0	\$0.06242	0					Remain on Kendall Co. Aggregation with Dynegy Energy
Kendall County Forest Preserve	0927007163	Pavillion 8225 State Rte. 71	0-100 kW	3	0.06242	\$0.19					Remain on Kendall Co. Aggregation with Dynegy Energy
Kendall County Forest Preserve	9361578000	NS Rt 52 4E McKanna Rd	Watt Hour	0	\$0.06242	0					Remain on Kendall Co. Aggregation with Dynegy Energy
Kendall County Forest Preserve	7110370018	11285C Fox Rd	Residential	158	\$0.06242	\$9.86					Remain on Kendall Co. Aggregation with Dynegy Energy
Kendall County Forest Preserve	1938021081	11285 Park Ranger	Residential	4738	0.06242	\$295.75					Remain on Kendall Co. Aggregation with Dynegy Energy

Gas Audit Analysis



- **Review of Natural Gas Contract (Supply/Delivery)**
 - **11 accounts reviewed**
 - 8 accounts currently under contract with Santanna Energy
 - » NGI + \$0.03/month
 - » Contract rollovers every month
 - NGI + \$0.03 program no longer available for enrollments
 - Projected annual therm volume of 4,945
 - Accounts on the correct rate, rider, and tariff charges
 - 3 accounts with Nicor Gas (2 commercial and 1 residential)
 - » Monthly variable rate
 - » Annual therm volume of 1,647
 - » Municipal Tax and Sales Use Tax Reduction

Summary of Key Findings



Electric

- We are recommending that the Kendall County Forest Preserve secure a 20 month forward contract extension for the 5 electric accounts on the following:
 - “All Inclusive” Fixed rate of \$0.06282
 - Dynegy Energy
 - 20 month term
 - Contract term allows for the aggregate bid option with the County Municipal Facilities in June 2019
 - Credit Approved under the ComEd purchase of receivables program
 - Projected annual savings vs. current Champion Energy contract = \$1,032
- Remaining accounts to stay under current program options

Gas Supply

- We recommend transitioning remaining 3 accounts over to Santanna Energy Services
 - 12 month contract
 - NGI Index plus \$0.04
 - Automatically renews month to month at same rate for life of the contract
 - NGI + \$0.04 has average \$0.05005 less than Nicor since Jan. 2016
 - Projected Annual Savings = \$82.00
 - Municipal and Sales Use Tax Savings = \$58.99

**Total Annual Savings
\$1,172**

To: Kendall County Forest Preserve District Board of Commissioners

From: David Guritz, Director

RE: Proposed Semi-Private Lessons Fees and Charges

Date: April 18, 2017

District staff is proposing establishment of a new Semi-Private Lessons program service at Ellis House and Equestrian Center that will extend a new 2-person lesson program service for Commission consideration.

With an increase in interest in riding lessons during the summer months, and limited availability is lesson openings, Ellis House and Equestrian Center program staff members recommend offering a Semi-Private lesson option for approved lesson students.

This would allow us to schedule 2 lessons into 1-hour lesson schedule slots, benefiting both the equine program and the clients.

Some benefits include; learning the courtesies of riding with others, having a visual learning tool of other riders, socializing with others with the same horse interests and a discounted rate for the client, while making more money for the program.

District Staff Recommendation:

Staff recommends Commission approval of the proposed fees and charges as presented at the April 18, 2017 Commission meeting.

Semi-Private Lessons – Proposed Fees and Charges:

Description: 60 minute session; 15 minutes brushing and tacking up, 30 minutes riding, and 15 minutes untacking and lesson review. Offered to approved lesson students only, under the judgement of horsemanship instructors! This is a lesson for 2 students in one time slot.

Kendall County - \$30 individual \$120 for package of 5

Out-of-County - \$35 individual \$140 for package of 5

*These prices are PER STUDENT. Meaning we will be bringing in \$48 - \$60 in an hour lesson, opposed to \$32 - \$45 in our private lessons.

**Will be offered by appointment only, during our already scheduled lesson times.

To: Kendall County Forest Preserve District Board of Commissioners

From: David Guritz, Director

RE: Proposed Lead Line Lessons Program Fees and Charges

Date: April 18, 2017

District staff is proposing establishment of a new Lead Line Lessons program service at Ellis House and Equestrian Center for younger students for Commission approval.

Staff recommends consideration of approval of the proposed fees and charges as presented.

District Staff Recommendation:

Ellis House and Equestrian Center program staff is proposing the offering a "Lead Line Lessons" program service that would include horsemanship instruction as part of a lead line riding program for younger students. The program will provide educational opportunities that will compliment beginner lead-line riding lessons.

Lead Line Lessons – Proposed Fees and Charges:

Description: 30 minute session; 10 minutes brushing and assistance tacking up, 15 minutes riding (lead line only), 5 minutes at the end for lesson review. *AGES 4 TO 6 YEARS OLD ONLY!*

Kendall County -	\$20 individual	\$85 for package of 5
------------------	-----------------	-----------------------

Out-of-County -	\$25 individual	\$110 for package of 5
-----------------	-----------------	------------------------

****Will be offered by appointment only, during our already scheduled lesson times to avoid conflict with other programs in the barn.**

ARTLIP and SONS, Inc.

230 South Broadway
Aurora, Illinois 60505
(630) 896-1560
Fax (630) 896-1198
www.artlipandsons.com

PROPOSAL

SPECIFICATIONS AND ESTIMATE

NO. E-25006

Attention: Kim Olson

PAGE NO. OF PAGES

PROPOSAL SUBMITTED TO Kendall County Forest Preserve		PHONE 630-553-4252	FAX	DATE 9/09/16
STREET 110 West Madison Street		JOB NAME Planned Maintenance		
CITY, STATE AND ZIP CODE Yorkville, Illinois 60560		JOB LOCATION Hoover Forest Preserve - 11285 W. Fox Road		
ARCHITECT	DATE OF PLANS	Yorkville, IL 60560	JOB PHONE	

We hereby propose to furnish materials and labor necessary for the completion of:

In the spring we will perform our cooling maintenace, cleaning and operations check on your (5) Geo-Thermal heat pumps. We will also perform maintenance on all pumps at this time. In the fall we will change the system over and check all operations. The filters will be changed during the spring inspection and will be supplied by us.

\$1,827.00/Per Year

WE PROPOSE hereby to furnish material and labor --- complete in accordance with above specifications, for the sum of:

One Thousand Eight Hundred Twenty-Seven and 00/100 ----- dollars (\$ 1,827.00).

Payment to be made as follows:

Any amount due under this agreement which is not paid when due shall bear interest at the rate of 1-1/2 percent per month from the date such amount was due until paid upon acceptance of this proposal. In the case of default in meeting terms of payment, owner agrees to pay all costs and reasonable attorney's fees if action is brought to collect the amount due upon acceptance of this proposal.

All material is guaranteed to be as specified. All work to be completed in a substantial workmanlike manner according to the specifications submitted, per standard practices. Any alteration or deviation from above specifications involving extra costs will be executed only upon written orders, and will become an extra charge over and above the estimate. All agreements contingent upon strikes, accidents or delays beyond our control. Owner to carry fire, tornado and other necessary insurance. Our workers are fully covered by Workman's Compensation Insurance.

Authorized
Signature

JAY D. BEHRENS

Note: This proposal may be withdrawn by us if not accepted within 30 days.

ACCEPTANCE OF PROPOSAL The above prices, specification and conditions are satisfactory and are hereby accepted. You are authorized to do the work as specified. Payment will be made as outlined above.

Date of Acceptance: _____

Signature _____

Signature _____

NOTES:

- 1) As a Planned Maintenance customer you are entitled to priority service over non-agreement customers along with a 10% discount on parts and discounted labor.

Discounted Labor as of June 1, 2016 (Rates Adjusted Annually)

Regular Time	136.00/Hr.	Monday - Friday 8:00 A.M. - 4:30 P.M.
Time and Half	193.00/Hr.	After 4:30 P.M. and Saturdays
Double Time	247.00/Hr.	Sundays and Holidays

- 2) The above work is for planned maintenance only. Any deficiencies in the system(s) will be noted and will not be addressed without prior approval.
- 3) This agreement would begin on the acceptance date and shall automatically renew. This agreement is subject to price revision on its anniversary date and may be canceled by either party at that time.

ARTLIP and SONS, Inc.

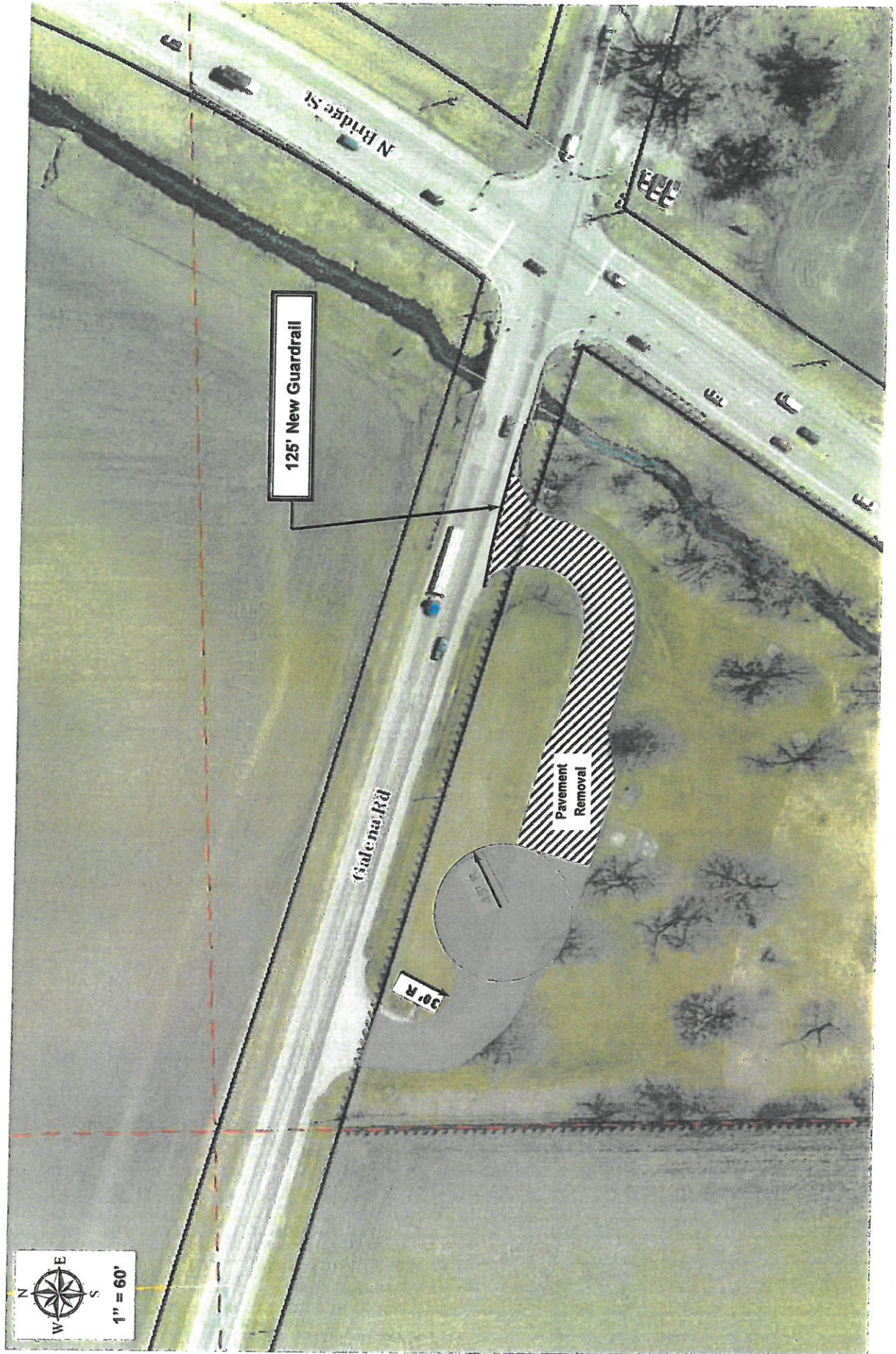
THIS PAGE BECOMES PART OF AND IN CONFORMANCE WITH PROPOSAL NO. E-25006

Job Name Planned Maintenance

Signature _____ Date _____

Submitted by JDB Date 9/09/16

Signature _____ Date _____



125' New Guardrail

Pavement
Removal

30' R



Garbage and Recycling Hauling
 Bid Opening: April 12, 2017

		Waste Management	Groot	Republic Services
Garbage Hauling				
Harris Forest Preserve	8 months (April - December)	\$755.68	\$984.00	\$880.00
	4 months (December - March)	\$226.72	\$264.00	\$220.00
Hoover Forest Preserve	8 months (April - December)	\$1,007.60	\$1,160.00	\$1,040.00
	4 months (December - March)	\$251.92	\$312.00	\$260.00
Ellis House & Equestrian Center	7 months (April - November)	\$484.89	\$560.00	\$490.00
	5 months (November - March)	\$188.90	\$215.00	\$175.00
		\$2,915.71	\$3,495.00	\$3,065.00
Recycling Hauling				
Harris Forest Preserve	8 months (April - December)	\$352.64	\$368.00	\$200.00
	4 months (December - March)	\$75.56	\$60.00	\$60.00
Hoover Forest Preserve	8 months (April - December)	\$251.92	\$240.00	\$200.00
	4 months (December - March)	\$75.56	\$72.00	\$80.00
Ellis House & Equestrian Center	7 months (April - November)	\$220.43	\$210.00	\$280.00
	5 months (November - March)	\$94.45	\$90.00	\$125.00
		\$1,070.56	\$1,040.00	\$945.00
Annual Cost TOTAL		\$3,986.27	\$4,535.00	\$4,010.00

Per event cost for additional trash and/or recycling waste removal

		Trash	Recycling	Both	Current Annual Cost
Waste Management	Harris	\$75.57	\$62.98	\$138.55	\$2,570.16
	Hoover	\$88.16	\$75.57	\$163.73	\$2,840.04
	Ellis	\$62.98	\$50.38	\$113.36	\$1,642.44
					Total \$ 7,052.64
Groot Industries	Harris	\$100.00	\$30.00	\$130.00	Potential Savings \$3,066.37
	Hoover	\$120.00	\$40.00	\$160.00	
	Ellis	\$60.00	\$40.00	\$100.00	
Republic Services	Harris	\$72.00	\$18.00	\$90.00	
	Hoover	\$90.00	\$32.00	\$122.00	
	Ellis	\$32.00	\$32.00	\$64.00	



APPLICATION PROCESS & INSTRUCTIONS

Telephone (303) 398-0400, Fax (866) 351-9503

PUBLIC GRADE CROSSING APPLICATION

It is the Railroad's policy that two existing grade crossings must be removed for one new grade crossing installation to be approved. INCOMPLETE applications may result in processing delays. Applications submitted without the required fees will not be processed.

If this application is approved, applicant agrees to reimburse the railroad for any cost incurred by the applicant incident to installation, maintenance, and/or supervision necessitated by this installation and further agrees to assume all liability for accidents or injuries which arise as a result of this installation. **A non-refundable fee in the amount of \$4,000 USD (\$5,328 CAD) is due with the application.** In addition, fees will be assessed pursuant to a written crossing agreement.

(Be sure to list the check number(s) at the bottom of the cover sheet AND application)

Make check(s) payable to:

OmniTRAX Inc.
C/O AR Real Estate Department
252 Clayton Street
Denver, CO 80206

(As information, future payments will also be sent to the address listed above.)

If the submitted application and/or plans require review by an environmental (HAZMAT) or other outside consultants, it will solely be at the applicant's expense and in addition to the aforementioned fees.

Once an executable Public Grade Crossing agreement is submitted to you, the agreement must be fully negotiated and executed within one hundred twenty (120) days. Thereafter, the application and materials will be archived and resubmission (including fees) will be required.

Canadian residents/businesses, this fee is a taxable supply, please include applicable GST

PLEASE INITIAL HERE INDICATING YOUR UNDERSTANDING OF THIS POLICY: _____

CHECK NUMBER(S): _____

RAIL MADE

EASY

SECTION 1: TO BE COMPLETED FOR ALL CROSSINGS

1. Complete Legal Name of Applicant: _____
2. Agreement to be in the name of (if different from above): _____
3. Type of Entity (please mark one): Corporation ☐ LLC ☐ Individual ☐ Municipality ☐
Partnership ☐ General ☐ Limited ☐ Other ☐ _____
4. If applicable, state/province of incorporation or organization: _____
5. Federal Tax Identification number (U.S. Leases): _____
6. Mailing Address: _____
7. Overnight Delivery Service Address (if different): _____
8. Contact Person: _____ Title: _____
9. Phone No.: () _____ Fax No.: () _____
10. Email: _____
11. Email Address Where Notices Can be Sent to: _____
12. Billing Contact Name, Phone Number, and Address Required: _____

13. Type of Road Crossing:

- | | | |
|------------------------------------------------|-------------------------------------------------------|------------------------------------------------|
| <input type="checkbox"/> Private Farm Crossing | <input type="checkbox"/> Private Commercial Crossing | <input type="checkbox"/> Contractor's Crossing |
| <input type="checkbox"/> Pedestrian Overpass | <input type="checkbox"/> Pedestrian Underpass | <input type="checkbox"/> Other _____ |
| <input type="checkbox"/> Existing Crossing | <input type="checkbox"/> New Installation | <input type="checkbox"/> Relocation |
| <input type="checkbox"/> Permanent Use | <input type="checkbox"/> Temporary Use for _____ Mos. | <input type="checkbox"/> Reconstruction |

14. Crossing will be used to access _____

15. Proposed Width of Crossing: _____ feet

16. Desired Material for Crossing (circle one): Wood Planks / Concrete / Asphalt / Rubber / Other _____

17. Type of Vehicles to be driven over crossing:

- | | | |
|-----------------------------------------|-------------------------------------------------------|--------------------------------------|
| <input type="checkbox"/> Passenger Cars | <input type="checkbox"/> Recreational Vehicles | <input type="checkbox"/> Pickups |
| <input type="checkbox"/> Farm Equipment | <input type="checkbox"/> Heavy Construction Equipment | <input type="checkbox"/> Other _____ |

18. Approximate number of daily one way trips over the crossing _____

19. Name of Owner of Property to be served by crossing _____

20. Address if different than above _____

21. Railroad being crossed: _____

22. Milepost (application will not be processed without a MP) _____

23. Crossing is located in the: _____ Section _____, Township _____, Range _____

(Example: SE ¼ of NW ¼ Section 15, Township 39N, Range 12E)

In/Near the City of _____ County _____ State _____

Attach a legal description of your property to be served by the crossing and a property or county map showing the location of the crossing. Indicate on the map the distance measured along the track between the crossing and fixed objects in the vicinity (i.e., bridge, culvert, railroad mile marker, public road).



PUBLIC GRADE CROSSING APPLICATION

Telephone (303) 398-0400, Fax (866) 351-9503

SECTION 2: TO BE COMPLETED FOR EXISTING CROSSINGS ONLY

Name(s) of previous users of crossing _____

Crossing is currently covered by Agreement Number _____

Dated _____ with _____

SECTION 3: TO BE COMPLETED FOR INSTALLATION OF NEW CROSSINGS ONLY

How is the property currently accessed?

Why was the access to property not obtained from previous owner?

Desired crossing will be _____ feet () North () South () East () West

Of nearest _____ () Public () Private road crossing.

Track is in _____ ft. cut/fill Number tracks crossed _____ Track is on: () Curve () Straight

SECTION 4: **REQUIRED** Location: Geographical Coordinates (in decimal degrees)

Latitude _____ Longitude _____

Date: _____

LIST CHECK NUMBER(S): _____

Signature: _____

Name Printed: _____

Title: _____

Phone No.: _____

BE SURE TO RETURN THE COVER SHEET WITH YOUR APPLICATION

'Fostering their imagination'

Natural Beginnings preschool program lets kids explore outside world

By TONY SCOTT

tscott@kendallcountynow.com

If a parent enrolls their child in the Kendall County Forest Preserve District's Natural Beginnings Early Learning Program, their child is most likely going to get dirty. And that's OK. In fact, it's encouraged.

The program began humbly as a part-time project with three students. After program manager Megan Gessler took it over in 2011, it quickly grew and this year enrolled 48 students.

Natural Beginnings is a nine-month nature preschool program that introduces kids aged 3 to 6 "to the world around them by exploring various nature-based themes," according to the Forest Preserve District's website. But Gessler will tell you it's much more than that.

"You never really know what you're going to encounter when you're out with the kids, and that's what makes it so fresh and exciting and new," Gessler said. "You see their eyes sparkle and see that look of wonder and awe in their face, which I think is lacking in a lot of what we know of today as an academic program. I think we need to bring more of that wonder and awe back into our childhood and let our kids play outside and get dirty and get messy. It's OK because they're learning while they're doing that."

On a recent day at the Hoover Forest Preserve in Yorkville, where the program's classes take place, teacher Stefanie Wiencke patiently and gently corralled her group of students for her noon class. Parents dropped off kids and backpacks, and some of the early arrivals helped fill bird feeders or played in the nearby "mud kitchen," making recipes out of, well, mud.

The day was crisp with a bit of a chill in the air, but Wiencke's class would be spending much of its time outdoors. Sitting in a circle around Wiencke, the students enjoyed a "good morning song" followed by Wiencke reading a few pages of a book about bird feathers.

Then, it was time for the hike. The children, bundled up and playful, yell "Peanut butter and jelly!" One child volunteers, "Adults are the bread!" It's their reminder to stick together when they are on the trail.

Wiencke came to the United States from Germany in 2007, settling in Oswego. She holds a degree in early childhood education and a certification in environmental science.



ABOVE: Teacher Stefanie Wiencke leads her students on a hike during a recent school day in the Natural Beginnings Early Learning Program. Aides Jessica Vochburgh and Kathy Berndt help out with the youngsters toward the back of the line. Vochburgh is a lead teacher and an aide in Wiencke's class, and Berndt is a teacher's aide.

She recalled that she was disappointed in the traditional preschools she found in the U.S. as she looked for one in which to enroll her daughter.

"I was looking around for preschools and I was so shocked," she said. "My daughter went to a preschool where the kids were not allowed to be out; when they were out, they were out for 10 minutes, it was a rubber playground. I know things have changed and it was 10 years ago, but 10 years ago it was really shocking for me."

See NATURE PRESCHOOL, page 27

LEFT: A student helps fill bird feeders before his Natural Beginnings class at the Hoover Forest Preserve. The nine-month preschool program introduces children aged 3 to 6 to the natural world around them.

Photos by Tony Scott - tscott@kendallcountynow.com



• NATURE PRESCHOOL

Continued from page 1

She recalled being amused when the parents were invited to the preschool for Thanksgiving dinner and had to use plastic knives to cut the turkey "because it was dangerous." "I feel kids need exposure to the real world, and they need to find out what they can do," she said. "Here we let them try out real things. They are allowed to touch the mud, they are allowed to play with the leaves, they have sticks, they pretend whatever the sticks are. It's really fostering their imagination out here. We let them explore risk."

Wiencke started volunteering at Natural Beginnings in 2013, and after a year joined the staff as an aide. She has had her own class for the past two years, and it's a mixed-age class, she said.

"The kids can stay for two or three years in the same class, which really helps to create good relationships," she said. "When they start, they are young, but they see the older kids and they catch up to what the older kids are doing. And the older kids think, 'I know what to do and I can show the younger kids. We see a lot of good leadership skills in the classroom.'"

Wiencke said getting kids outside helps them physically—they get Vitamin D exposure, they build up their physical stamina and fine motor skills—as well as mentally and emotionally.

"They have the whole sensory input in nature," she said. "Not one day is the same, so they always have to adapt to different things. Even if we go to the same spot every day, there is something different outside. This is something that makes them really flexible in thinking and at the same time they are really absorbing things."

Getting kids outside helps them be more patient and calms them down, Wiencke said.

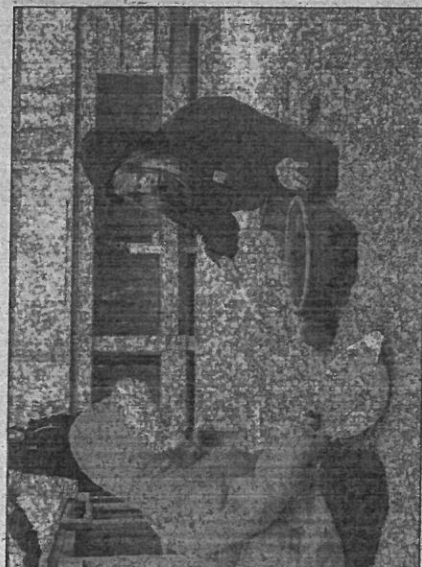
"We rarely have indoor days, but when we have indoor days they don't seem as satisfied. It seems like they are bouncing off the walls," she said. "I feel it really helps them to calm down, it helps them to be patient."

Parents with kids in the program praise it for a variety of reasons.

Michaelene Bell of Yorkville said she was intrigued by the program as soon as she read the description online.

"We are so glad we signed our kids up here," she said. "I wish this program was around when my oldest was in preschool. Kids spend so much time indoors for most of their academic careers; we really wanted our kids to be introduced to learning in this setting. The kids love it and we love Miss Stefanie and Miss Kathy."

Sylvia Scoggin of Yorkville said she wishes it could be available for older students; she said her daughter will be



Two Scottsboro children play in the "mud kitchen" at Hoover Forest Preserve before their Natural Beginnings class.

moving onto Kindergarten next year.

"My little girl loves to get dirty, be outside, explore and touch everything, so this school was a perfect fit," Scoggin said. "She even schools my Cub Scout den I lead when we go on our hikes about all the plants, trees and insects she sees. I honestly think she will later in life go to school or get a job in a nature/outdoor related field because of Natural Beginnings. I can't thank Ms. Stefanie, Ms. Kathy, Ms. Jess, Ms. Tina and Ms. Megan enough for teaching, caring and loving my daughter these past two years, and for helping shape her into the awesome little person she is today."

Laura Scheinholtz of Montgomery has a 4-year-old daughter in her first year at Natural Beginnings. She said she could "not be happier" about Natural Beginnings.

"With my background as a play advocate and early childhood education consultant, I thought for sure I would be putting her in a museum preschool," Scheinholtz said. "But as she grew, it became evident that she flourished outside. That's when I began looking into nature-based education in our area. I was introduced to Megan Cessler by a mutual friend and, simply from speaking with her initially, I was impressed. Natural Beginnings allows families to come join them for a class session to measure the fit of your child and the school. Our daughter inserted herself right into the class and cried big tears when we had to go home on our visit day. We enrolled her immediately."

Scheinholtz said the educational lessons can change and be flexible in the Natural Beginnings environment.

"Besides getting to go on a 45-minute hike each day, our daughter benefits by being in a child-directed environment," she said. "The teachers don't have lesson plans. They

have 'lesson intentions.' If the class becomes interested in another topic during their time together, the teachers will build the rest of the curriculum around that topic. She is also participating in an active, hands-on, play-based environment. This is an ideal way for young children to learn."

She continued, "The teachers at Natural Beginnings are top-notch. They are completely willing to work with each family to talk about strengths, weaknesses, desired/needed learning outcomes, and progress. They take an extraordinary amount of time documenting each child's journey in individual binders during the year. Additionally, they post photos weekly on a private school Facebook page. I guarantee, these wonderful folks are not paid enough."

Jill Johnson of Newark said her second child to attend Natural Beginnings will complete the program this spring and that she is "tearing up just thinking about this."

"Natural Beginnings has been a part of our family since I think its second year, and we have grown together," she said. "With our first daughter, I thought of it more as a supplement to the conventional preschool experience. I absolutely loved the nature focus but was concerned about kindergarten readiness—would she learn enough of the letters/numbers kind of stuff to be successful in the grade school years ahead of her? But Megan and her talented staff have responded to our feedback over the years and managed to artfully weave things like Jolly Phonics, math skills and handwriting into the nature and adventure experiences that have drawn us all to the program."

Johnson said the program has prepared her kids academically speaking, but that it has also helped her children's spirits.

Learn more

For more information on Natural Beginnings, contact program manager Megan Cessler at 620-559-3939 or at mcessler@kendall.k12.il.us, or visit kendallforest.com/natural-beginnings-yorkville.php.

"...far more important to me is what I feel it has done for my children in their spirits. In the way they see the world and in their journeys to discover who they are and what they are about," Johnson said. "They know the world is bigger than them. They have compassion for other people and for the plants and animals that share our earth because they have observed them, touched them, tried to understand them. They have been carefully taught that the earth needs their help but without overwhelming them or making them feel that the problems are so big they can't make a difference. They feel a responsibility and a confidence that they themselves can and should make things better. And they can find wonder in small things all around them. I can't keep them from the challenges and stresses inevitably ahead of them in life, but largely because of Natural Beginnings, I know they will always be able to find beauty and things to marvel at even in difficult times because their eyes and hearts have been opened to it through their experiences here. Their dad and I are eternally grateful to Natural Beginnings for that."

Cessler recalled a group of students who attended a birthday party over the summer at a local YMCA and were observed by the party's supervisors working together.

"They couldn't believe what they saw," she said. "The kids were pulling those foam blocks from the foam pit, and pulling them out, stacking them up and creating a for cabin out of the foam blocks. Other parents in the gym started watching, and pretty soon the instructors said, 'How do these kids know each other?' And the parents said they went to preschool together, and the other parents and the instructors asked, 'What preschool did they go to?' Because they'd never seen children act like almost a well-oiled machine."

She continued, "The kids were so used to working together and knowing their strengths and having really good communication. So I think that's the benefit of sending your child to a program like this, because they get to know how to work well with each other and that is so essential not only when they get to school but for when you go out to the workplace and into the world. What better skills to prepare you for life?"