

# Kendall County Planning, Building & Zoning

807 West John St  
Yorkville, IL 60560

630-553-4141

[www.kendallcountyil.gov](http://www.kendallcountyil.gov)



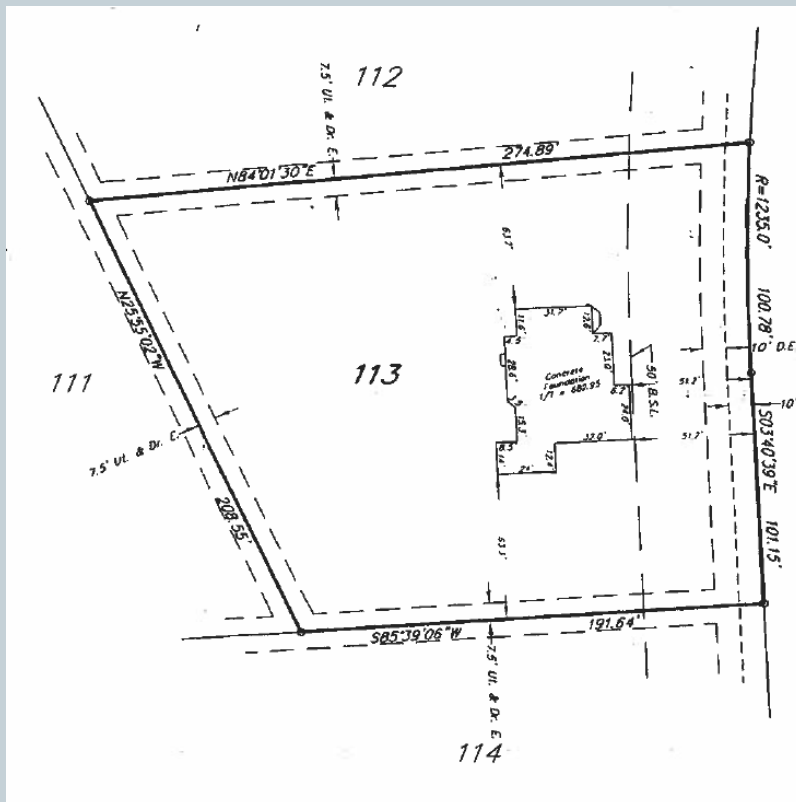
## ADDITIONS & REMODELING SUBMITTALS –

- ❖ AN ORIGINAL APPLICATION
- ❖ THREE SETS OF CONSTRUCTION  
DRAWINGS
- ❖ TWO COPIES OF PLAT OF SURVEY

# Plat of Survey



- Submit two copies of your plat of survey showing the following:
- Location & dimensions of addition.
- Distance of addition to all lot lines and nearby structures.
- Location of all other structures on the lot.



# Foundation Plan

(Additions Only)



## Trench Foundations:

- Dimensions & Depth
- Drain Tile & Damp Proofing
- Anchor Bolt Size & Spacing

## Concrete or Masonry Foundations:

- Dimensions of Footings
- Drain Tile & Damp Proofing
- Anchor Bolt Size & Spacing

# Floor Plan Review



Must show the following:

- Electrical Devices
- Plumbing Fixtures
- Windows – Location, Size, Type & U Value
- Doors – Location & Size
- Appliances – Sizes & Locations

# Framing Plan Review



## Must show the following:

- Rafter size and spacing
- Stud size and spacing
- Joist sizing and spacing
- Truss Certificates and layout
- Floor sheathing
- Roof sheathing
- Foundation, wall and attic insulation
- Shingle type and felt paper weight

# Plan Review



## Elevations

- Front
- Sides
- Rear

## Energy Code

- Res check or stamped drawings showing compliance with the International Energy Conservation Code (most recently adopted by the State of Illinois).